



maars LIVING WALLS®

metaline

minimum thickness
maximum values
小厚度, 高价值

rapid assembly and
unique flexibility
快速组装, 独特灵活

Welcome to the world of Maars! Established in 1946, Maars is a global market leader in modular wall solutions, supported by our dedicated employees. We offer the most innovative integrated wall solutions covering markets such as healthcare, offices, airports, education, hospitality, industry, and retail.

Ongoing product development and specialization is based on growing insights and worldwide collaborations with dealer partners, customers and architects. The result: a wide range of solutions spanning conventional to high-end design, that meet certified fire ratings and acoustic performance benchmarks.

Maars Living Walls solutions enable you to be one with your environment, thanks to smart integration of all the latest technologies, materials and functions. Get inspired – discover more about Maars, our solutions, and global capabilities in this brochure.

欢迎来到马尔斯的世界！马尔斯成立于 1946 年，是模块化墙体解决方案的全球市场领导者。我们提供最具创新性的集成墙体解决方案，涵盖医疗保健、办公室、机场、教育、酒店、工业和零售等多个领域。

持续的产品开发 and 专业化基于不断增长的市场洞察力以及与经销商合作伙伴、客户和建筑师的全球合作。正因如此，马尔斯拥有从传统设计到高端设计的广泛解决方案，满足经认证的防火等级和声学性能基准。

马尔斯 Living Walls 代表着我们众多能使您与环境相融洽的模块化墙体的解决方案。这是通过智能集成最新的技术、材料和功能才能得以实现。希望您能通过这本手册来了解马尔斯的独到解决方案和领先全球的实力并进而捕获灵感。



visual & acoustic privacy

Transparency and open space design are trending in interiors. However, experience teaches that visual and acoustic privacy becomes an issue more and more in these surroundings. Confidential meetings and phone calls ask for concentration, silence and privacy. Create private spaces with the steel wall partitions of Metaline.

视觉与听觉隐私

通透感和开放式空间设计是目前室内设计的趋势所在。然而，经验告诉我们，在开放式的工作环境中，视觉和听觉隐私会成为大家越来越困扰的问题。私密会议和电话需要专注、安静并具有隐私性的环境，Metaline 的钢制隔断可为您创建一个极具隐私的办公空间。





metaline

Maars has put all its creativity and inventiveness into making optimal use of the versatile qualities of steel. Just how well Maars has succeeded in doing so has been proven amply by the global success of its Metaline steel partition wall range. Metaline distinguishes itself through ingenious construction combined with a sleek and slim design.

马尔斯尽可能的运用创意和发明以充分利用钢的功能多样性。马尔斯 Metaline 钢制隔断在全球大放异彩，足以证明其成功。Metaline 以其精巧的构造糅合流畅纤细的设计而与众不同。

The patented click system offers unprecedented, quick assembly and unique adaptability. Metaline's versatility lies in its aesthetic finishes as well as the ability to integrate special features. This range consists of a wide selection of magnetic coat hooks, picture hooks, document holders, name plates and many other smart magnetic solutions.

专利的卡扣系统更是提供了前所未有的快速组装和独一无二的适应性。Metaline 的功能多样性体现在其精美的饰面、整合特色功能的能力及其对于马尔斯磁吸配件的适用。这些配件选择多样，包括磁吸衣架、挂画钩、文件架、铭板以及许多其他精巧磁性解决方案。

■ versatile

■ design

■ adaptability

■ 用途广泛

■ 设计性强

■ 适应性强





独具匠心

metaline

features & benefits

Steel walls have many advantages for interior design, starting with impressive acoustic performance and fire resistant. The steel wall can also be used as an alternative to drywall.

- sound insulation up to 53dB
- fire resistance up to EI 60
- burning behaviour: A2 – S1, D0
- durable, 90% recyclable
- magnetic
- hygienic

特点与优势

钢制隔墙在室内设计中具有多种优势，从最令人印象深刻的声学性能和防火性能开始，同时也可替代干墙。

- 隔音高达53dB
- 防火等级高达EI 60
- 燃烧特性：A2 – S1，D0
- 耐用，90% 可重复利用
- 磁性
- 卫生



9/24



twist and click

Thanks to the patented twist-and-click principle of the Maars Metaline wall, significant time savings can be achieved in assembly. All wall, glass and door elements can be quickly and easily assembled into a very stable partition wall. Metaline walls also occupy less space than a standard partition wall, thanks to the special design and slim dimensions. With Maars Metaline you are automatically set-up for the greatest possible flexibility in the future. Changing, moving or expanding the system is simply a matter of twist-and-click.

—拧
—卡

归功于"拧→卡"的专利原理，马尔斯 Metaline 隔墙能够显著降低组装的时长，所有墙体、玻璃和门元素能被简单快速地组装成一道稳固的隔墙。由于独特的设计和纤细的尺寸，相较于传统隔墙，Metaline 墙占地更小。使用 Metaline，等于你自动为将来提供了更多的可能性，需要改变、移动、扩展 Metaline 系统，你只需简单地"拧→卡"。

metaline



maximum values

高价值

Seamless connections
to glass partitions
玻璃隔断无缝连接

Wall thickness 82mm
墙体厚度：82mm

Height up to 3500 mm
(137" - 13/16)
高度达到3500mm
(137英寸-13/16)

Joints 0 mm
0mm接缝

11/24

functional

Metaline not only offers the highest functionality – the unique steel modular wall solutions also excel when it comes to versatility. They are often found in healthcare and cleanroom applications, as steel walls are airtight, easy to clean and very robust. What’s more, a variety of accessories can be incorporated into the walls; windows and viewing panels, flush lighting, access panels and service feeds. All of which can be integrated where required. In this way, Metaline offers maximum design freedom.

多功能

Metaline不仅提供最强的功能-独特的钢模块化墙体解决方案，也兼具多功能性。钢板墙体的密闭性使之易于清洁且不易损坏，可经常应用于医疗空间和洁净室中。更重要的是，各种安装可集成到墙体中，在看不见的地方，窗户或灯具可以集成在任何你想要它们的地方。通过这种方式，Metaline提供了最大的设计自由度。

- health & care
- cleanrooms
- laboratories
- 健康与医疗
- 洁净室
- 实验室





durable and timeless

Sustainable design means a commitment to reusability. No problem at all with Metaline modular wall solutions. These can be installed quickly and used over and over again. They will maintain their appearance for years because they are easy to clean and not scratch-sensitive. And when it's time to refresh your interior design, you can easily re-upholster the wall panels with fabric, felt or veneer. In this way, you can easily and sustainably create a completely different look.

耐用且永恒

可持续设计意味着对可重复利用的承诺，使用 Metaline 模块化墙体解决方案没有任何问题，他们可以快速安装并重复使用。Metaline 可保持其外观多年，因为它们易于清洁且不易产生刮痕。当需要换新您的室内设计时，您可以轻松地用织物、毛毡或贴面重新装饰墙体。通过这种方式，您可以轻松且可持续地打造完全不同的外观。



endless flexibility

无限灵活

metaline



Metaline provides you with high performance and endless options in steel.

Metaline 可为您提供高性能和多样化的钢制隔墙选择。





versatility

多功能性

choose the maximum

最优化选择





reduce 减量化
reuse 再利用
recycle 可循环

committed to circularity

致力于循环

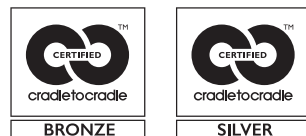
To Maars, the welfare of people in any space is essential. We're always looking for sustainable, responsible solutions and examining new production techniques. Reducing, reusing and recycling are rooted in our company philosophy: from environmentally-friendly coatings, to CO2 compensation and 5S 'lean manufacturing'. Our products help boost your BREEAM, LEED and WELL scores. To gain full control of our quality, environmental and health & safety policies, we have set up an integrated operational management system for all critical quality, environment and safety processes. By scrutinising the entire production process, we can produce more efficiently while reducing energy consumption. Maars' ongoing commitment to innovation and circularity has been recognised with a Cradle to Cradle™ Bronze certificate* for all our wall systems and ISO-9001 / ISO-14001 certification.

metaline

马尔斯始终把人类的空间福祉放在首位。我们一直在寻找可持续、负责任的解决方案，并不断研究新的生产技术。“减量化、再利用、可循环”深深植根于我们的经营理念：从环保涂料到二氧化碳抵消和5S“精益制造”方法论。同时，我们的产品也有助于提高 BREEAM、LEED 和 WELL 分数。为了能完美掌控品质、环境、健康和政策，马尔斯设立了一套完整的操作管理系统，通过此系统，质量、环境和安全的关键工序都能得以保障。通过对整个生产过程进行审查，我们可以在降低能耗的同时提高生产效率。马尔斯对创新和循环的持续承诺受到了广泛认可，我们的所有墙体都获得了 Cradle to Cradle 的铜级认证和 ISO-9001 / ISO-14001 认证。



vca



*Ask for our certified products.

create and design interiors beyond your imagination

创造和设计
超乎你的想象



maars 4D

Maars 4D places intelligent, highly visual and intuitive room planning software at your disposal, making it easier to specify and sell products.

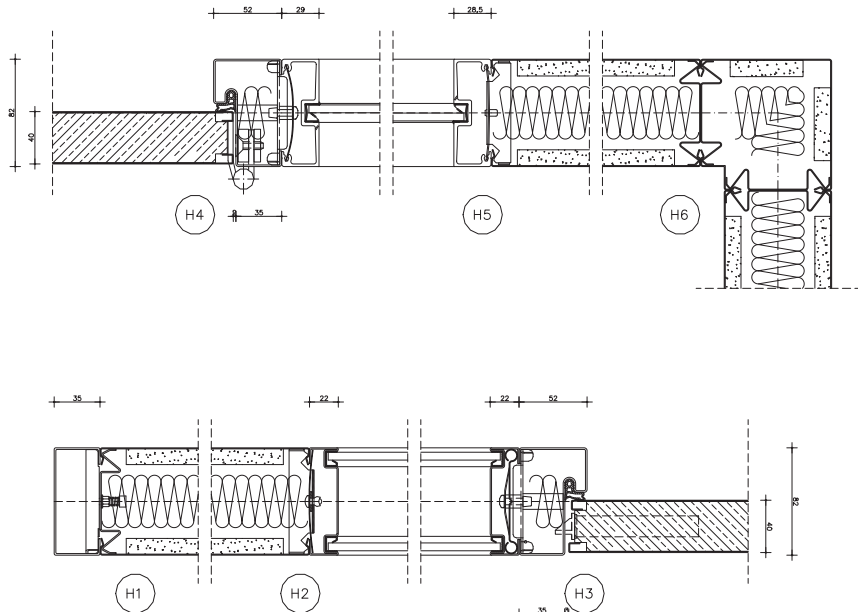
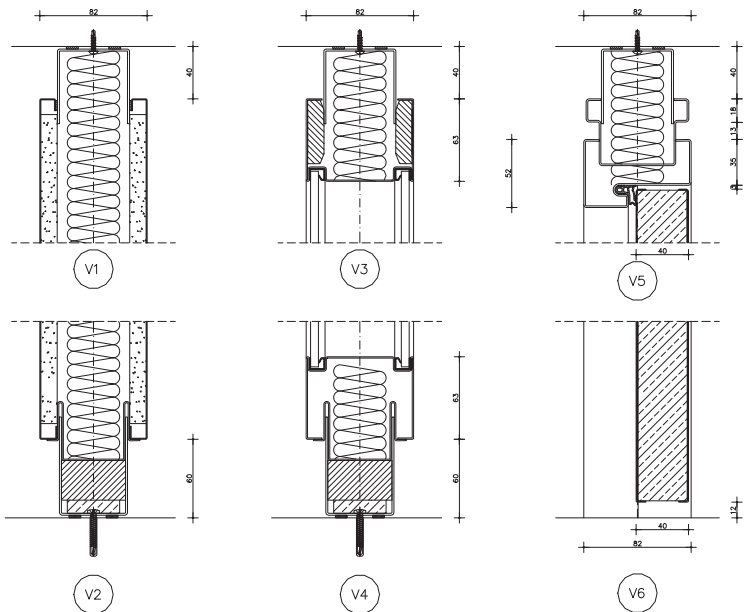
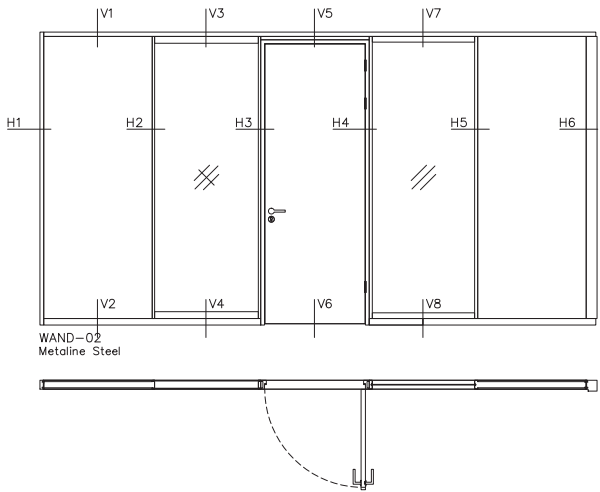
马尔斯 4D 为您提供智能、高度可视化和直观的空间规划软件，使指定和销售产品更加便捷。

21/24

访问 www.maarslivingwalls.com / www.maarslivingwalls.com.cn 了解更多

technical drawing

技术节点



metaline

technical specifications 技术参数

DESCRIPTION 介绍

Demountable steel faced partition.
可拆卸式钢制隔断

STRUCTURE 结构

- **SOLID ELEMENTS:**
 - Thickness: 82 mm
 - Studs: steel sections, 2 x 1.0mm clinched clamping stud
 - Panels: steel 0,8 mm on 12,5 mm plasterboard backing
 - Cavity: mineral wool
 - Floor and ceiling U-channels: 1,5 mm steel sections
- **GLAZED ELEMENTS:**
 - Double glazed panels in 6 or 8 mm thickness in aluminium or steel sections
 - Integrated blinds possible
- **DOOR ELEMENTS:**
 - Doorframe: aluminium or steel frames provided with 3 hinges
 - Door leaves: Wide range of doors from 40 mm or 82 mm double glazed doors. Check our doors range for further options

- 实体模块：
 - 墙体厚度：82mm
 - 龙骨：钢制，2x1.0mm固定夹紧龙骨
 - 面板：0.8mm钢板，背衬12mm石膏板
 - 内部：填充岩棉
 - 天轨和地轨：材质为1.5 mm厚度镀锌钢板
- 玻璃模块：
 - 铝制或钢制双玻窗框可配6或8mm厚度的玻璃
 - 可安装百叶
- 门模块：
 - 门框：铝制或钢制框架，配备3个铰链
 - 门扇厚度：40mm厚度门扇或82mm厚度的双玻隐框门

JOINT 连接

0 mm joint

无缝连接

FINISHES 饰面

- **SURFACE TREATMENT:** for all visible metal parts: environmental friendly epoxy powder coating approx. 80µ thickness.
- **COLORS:** according to Maars color chart. Other colors possible after consultation.
- **GLAZING:** a variety of options are available, such as sandblasting, film, painted glass. Other manifestations possible after consultation.
- 表面处理：可见金属部分：环保静电粉末喷涂，层厚约80µ。
- 颜色：可根据马尔斯标准色卡定做，更多选择可咨询销售。
- 玻璃：种类繁多，例如隔音夹胶玻璃、烤漆、隐私玻璃等，更多选择可咨询销售。

STANDARD DIMENSIONS 标准尺寸

- Height: 3500 mm
- Width: solid panels 900/1200 mm, glass 900/1200 mm
- Other sizes in height or width after consultation.
- Weight: 35 kg/m², solid elements
- 高度：3500mm
- 宽度：实体模块900/1200mm，玻璃模块900/1200mm
- 其他尺寸敬请咨询
- 重量：35kg/m²，实体模块

INSTALLATION 安装

- **TOLERANCES:**
 - Floor: +/- 13 mm
 - Ceiling: +/- 13 mm
 - Adjustable floor track for easy adjusting of tolerances
- **CONNECTION:**

All elements are connected by using clamping studs; monoblock elements are connected through a patented “twist and click” connector, enabling easy installation and easy disassembly.

- **INTEGRATION OF ELECTRICAL AND DATA SERVICES**

Perforated clamping studs provide access for wiring and other services.

Demountable panelling provides easy access for servicing afterwards.

- 公差：
 - 地面：±13mm
 - 天花板：±13mm
 - 地轨结构中含高度调节机构，便于现场安装
- 连接：

实体模块采用夹紧龙骨连接，玻璃模块之间采用马尔斯专用夹子"拧→卡"连接。使之更易于安装和拆卸。
- 强弱电走线支持：

夹紧龙骨上有预开孔方便于走线，可拆卸的面板结构方便于维护维修。

CLEANING 清洁：

Please check our website for our cleaning and maintenance instructions.

可查阅公司网站的清洁和维护说明。

ACOUSTICS 82 MM 82系列墙体的隔音性能
Weighted sound reduction index to
ASTM E 413-10 / ISO-717

- Solid steel:
up to Rw=48dB, STC=48
- Glass:
up to Rw=44dB, STC=44

标准隔音参数参照：ASTM E 413-10 / ISO-717

- 实体钢板系统：高达Rw=48dB，STC=48
- 玻璃系统模块：高达Rw=44dB，STC=44

Doors tested in doorframe 门

- Steel door:
up to Rw=37dB, STC=37
- Flush steel door:
up to Rw=36dB, STC=36
- Flush glass door:
up to Rw=30dB, STC=30

钢板门：高达Rw=37dB，STC=37
XL钢板门：高达Rw=36dB，STC=36
XL隐框双玻门：高达Rw=30dB，STC=30

FIRE RESISTANCE 防火

Fire resistance to EN 13501-21.

- Solid up to EI 60
- Glazed up to EI 30
- Door up to EI 30
- 标准防火参数参照：EN13501-21
- 实体墙模块防火等级可达EI60
- 玻璃系统模块防火等级可达EI30
- 门模块防火等级可达EI30

BURNING BEHAVIOR 燃烧特性

solid elements:

A2 – S1, D0

index to:

NEN-EN3823 / NEN-EN ISO11925-2

实体墙模块：A2 – S1, D0

索引至：NEN-EN3823 / NEN-EN ISO11925-2

Due to our policy of constant improvement our products are subject to change.

Please check for the latest details:

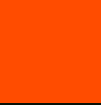
www.maarslivingwalls.com.cn

由于我们一直不断改进和提升，所以我们产品信息也不断有所变化。请浏览我们的网站以获取最新资讯：
www.maarslivingwalls.com.cn

LIVING OPTIONS 活性选项

Maars offers a wide range of options which can be integrated in our partitioning systems, depending on the type of wall.
Ventilation studs, sound panels, cupboards, shelving systems. White board Ventilation studs Sound Panels Cupboards shelving Dynamic lightning Panels clad with textile Privacy glass

根据墙体类型，马尔斯提供可整合入隔断系统的广泛选项。通风龙骨、吸音板、橱柜、货架系统、温控板、动态照明、多媒体、布艺包板、隐私玻璃以及各式马尔斯磁吸挂件，更多选项请与我们的销售联系。



maars LIVING WALLS®

12F South block, Guoco Changfeng City, No. 1, Lane 556,
Daduhe Road, Putuo District, Shanghai
上海市普陀区大渡河路556弄1号国浩长风城南楼12层

T+86 02132515505
info@maarsgroup.com.cn
www.maarslivingwalls.com.cn



products 产品

- | | |
|---------------------|----------------|
| Metaline | lalinea |
| String ² | lineaCube |
| Panorama | Doors |
| Horizon | Living Options |

expertise 专长

- | | |
|-------------------|----------------|
| Office 办公室 | Airport 机场 |
| Care & Cure 医院 | Hospitality 酒店 |
| Education 教育 | Industrial 工业 |
| Revitalisation 翻新 | Automotive 汽车 |